

Report on Open Enforcement Cases

Purpose of the Report

To inform members of the current situation regarding the enforcement caseload.

Recommendations

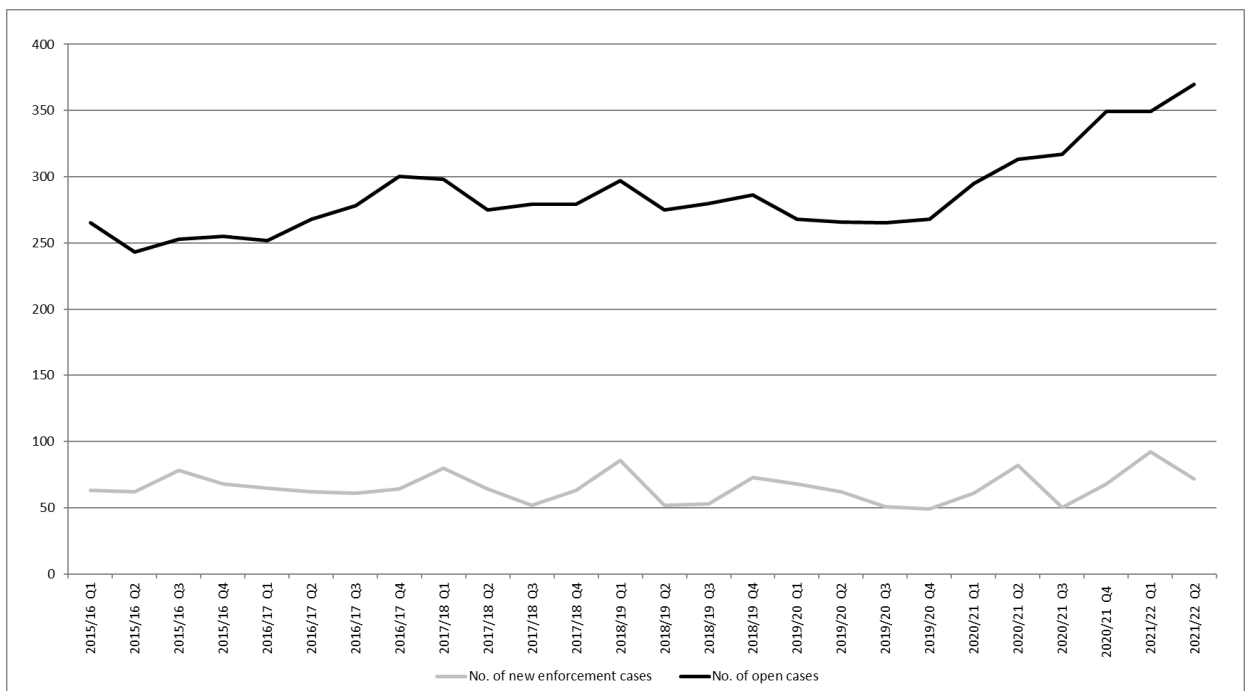
- That the report be received
- That a further update be provided alongside the next quarterly monitoring report on cases where enforcement action has been authorised.

This report will focus on of the numbers of new and open cases that have been received in the last two quarters compared to the numbers in the previous quarter.

In the first quarter of 2021-22 (April - June 2021) a further 92 new cases were reported, more than the previous quarter (68). The number of open cases at the end of the last quarter was 349. The number of open cases has remained the same in this quarter.

In the last quarter (July-Sept 2021) a further 72 new cases have been reported. The number of open cases at the end of the last quarter has increased to 370.

The figures for the two quarters are shown in the graph below.



A number of the cases have associated pending planning applications that are awaiting determination (16 as at 15 October 2021).

Date report prepared

15 October 2021